

Amana Contracting & Steel Buildings

Customer Success Story

Autodesk® Revit® Architecture
Autodesk® Revit® MEP
Autodesk® Revit® Structure Solutions
Autodesk® Navisworks®

Amana's decision to shift from AutoCAD to BIM software and solutions has already produced positive results for us. The use of BIM technology gives us a competitive edge by producing high quality documentation, shorter production cycles and an improved approach at servicing our clients.

— William Bsaibes
Green Initiative Manager -
LEED AP BD+C
Amana Contracting &
Steel Buildings

Adopting a BIM Future

How Autodesk Helped Amana Contracting & Steel Buildings Increase Speed To Market

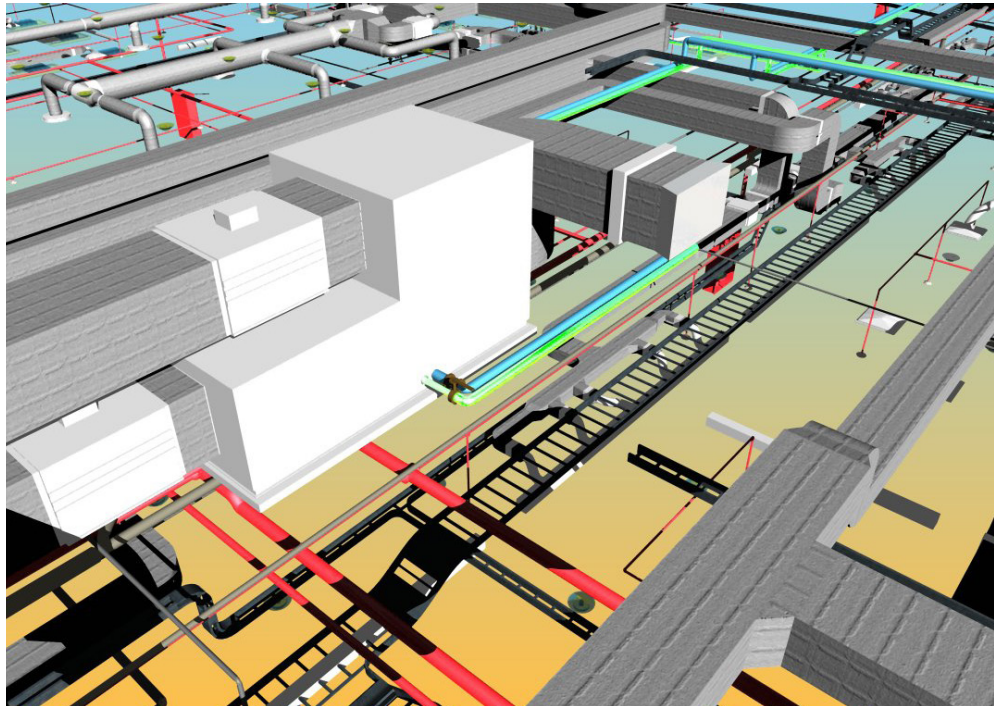


Image courtesy of Amana Contracting & Steel Buildings

Founded in Abu Dhabi in 1993, Amana Contracting & Steel Buildings is a leading regional design-build contractor of both industrial and commercial facilities, with over 1,500 buildings constructed across the region. With eleven operational offices in the Middle East, Amana provide to its clients a unique combination of local knowledge coupled with regional reach. It also leads the market in its ability to deliver turnkey solutions for extremely time sensitive industrial and commercial projects on time, within budget and delivering on quality requirements.

Although AutoCAD solutions have traditionally formed the backbone of software-based design, many architectural and design firms have found that the need for increased design flexibility and speed to market have been hampered by 2D thinking and the time-consuming demands of the software.

That's why over two-thirds of major contracting firms in the USA and Europe have moved to the next, 3D stage of BIM (Building Information Modeling). This clear trend in the market encouraged Amana to make the decision to a platform that would enable integrated project delivery.

As an existing Autodesk customer, the adoption of Autodesk BIM solutions was obvious. However, planning, training and implementation by local SI Omnix took a year from start to finish.

Installation of key strategic BIM software like Revit Architecture, Revit MEP, Revit Structure Solutions and Navisworks took just two months.

Now, Amana expects its operations and fast track development for projects in the UAE will be strengthened, given the demands for sustainable construction and Estidama (Pearl Rating) guidelines. Key to success is the ability Amana now has to access accurate and current project information for quick approval of key decisions.

"Amana's decision to shift from AutoCAD to BIM software and solutions has already produced positive results for us," according to William Bsaibes, Green Initiative Manager - LEED AP BD+C, Amana Contracting & Steel Buildings. "To date, we have seen an improvement in our productivity as we have saved four to six weeks from our drawing production. The new solution has also allowed our Quantity Surveying department to finalize quantities faster and with more accuracy. The use of BIM technology gives us a competitive edge by producing high quality documentation, shorter production cycles and an improved approach at servicing our clients."

In other words, Amana now enjoys smoother engineering and design flow, as well as more collaboration amongst various company departments.

The Revit BIM platform, which includes software like Revit Architecture, Revit MEP, Revit Structure and Navisworks, automatically creates essential project information, accurate floor plans, elevations, sections, quantity takeoffs, area calculations and schedules. The software allows architects, structural engineers and builders to work from a single integrated digital model that contains all information essential to the project.

So Amana's decision to use BIM software has allowed its architects to link a project's structural model into the architectural model, thus directly seeing the structural components on the drawings - resulting in a tighter integration between structure and architecture departments. The use of BIM technology has allowed Amana to make better informed decisions and also create stronger ties with their clients.

"We are pleased with the successful results of our implementation of BIM software for Amana. We are also upbeat that its stakeholders, partners and customers will highly benefit from the Revit platform advantages of efficiency, accuracy and quick delivery of results," claims Dr Jayant Deshpande, Director - CAE, Omnix International.

Amana is currently working on training and involving more of its staff in Revit BIM, as well as planning to roll out the solutions across its GCC-wide branch offices.



Image courtesy of Amana Contracting & Steel Buildings

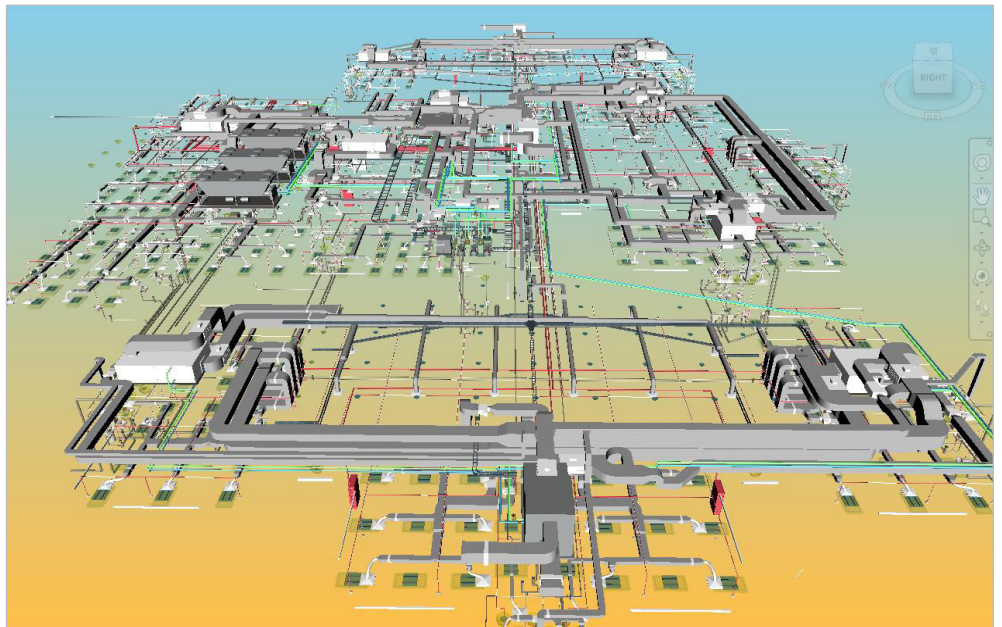


Image courtesy of Amana Contracting & Steel Buildings

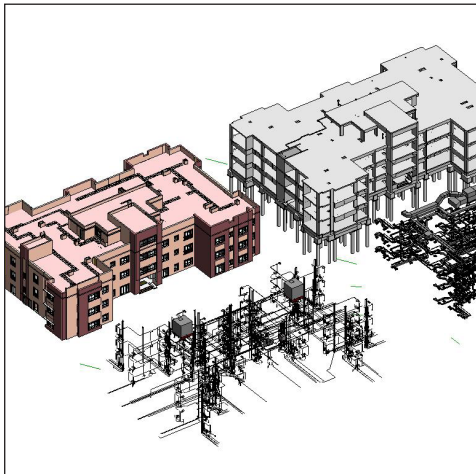


Image courtesy of Amana Contracting & Steel Buildings

We are pleased with the successful results of our implementation of BIM software for Amana. We are also upbeat that its stakeholders, partners and customers will highly benefit from the Revit platform advantages of efficiency, accuracy and quick delivery of results.

—Dr Jayant Deshpande
Director - CAE
Omnix International